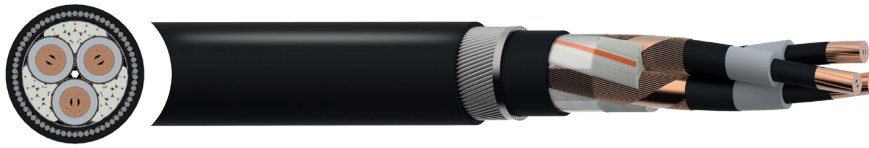


XHIAE 3.6/6kV Cable



Eland Product Group: MP45

APPLICATION

Portuguese reference Medium Voltage cable for power distribution and power supply stations used in Utility and Industrial applications, for rated voltages up to 3.6/6kV. Suitable for fixed installations, directly buried. Good mechanical protection.

CHARACTERISTICS

Voltage Rating U_0/U (Um)
3.6/6 (7.2)kV

Temperature Rating
Conductor maximum operating temperature: 90°C
Maximum short-circuit temperature: 250°C

Minimum Bending Radius
During installation: 15 x overall diameter
After installation: 10 x overall diameter

CONSTRUCTION

Conductor
Class 2 stranded Copper

Conductor Screen
Semi-conductive XLPE (Cross-Linked Polyethylene)

Insulation
XLPE (Cross-Linked Polyethylene)

Insulation Screen
Semi-conductive XLPE (Cross-Linked Polyethylene)

Metallic Screen
Copper tape screen

Filler
Extruded polymeric material

Bedding
PE (Polyethylene)

Armour
STA (Steel Tape Armoured)

Sheath
PE (Polyethylene) type ST7

Sheath Colour
● Black

STANDARDS

IEC 60228, IEC 60502-2

ISO/IEC 17025 LABORATORY TESTED

This product is subject to the Quality Assurance protocols of The Cable Lab®, an ISO/IEC 17025 accredited cable testing laboratory. Testing includes vertical flame, conductor resistance, tensile & elongation, and dimensional consistency, verified to published standards and approved product drawings.



8578



FS 672069



EMS 672067



OHS 672066

REGULATORY COMPLIANCE

This cable meets the requirements of the RoHS Directive 2011/65/EU. RoHS compliance has been tested and confirmed by The Cable Lab® as meeting the requirements of the BSI RoHS Trusted Kitemark™.



KN 036287





DIMENSIONS

ELAND PART NO.	NO. OF CORES	NOMINAL CROSS SECTIONAL AREA mm ²	NOMINAL DIAMETER mm		NOMINAL WEIGHT kg/km
			Over Insulation	Overall	
MP4506KV03025	3	25	13.0	44.5	3320
MP4506KV03035	3	35	14.0	47.0	3775
MP4506KV03050	3	50	15.0	49.5	4340
MP4506KV03070	3	70	16.5	54.0	5280
MP4506KV03095	3	95	18.5	58.0	6325
MP4506KV03120	3	120	20.0	61.5	7290
MP4506KV03150	3	150	21.0	64.5	8300
MP4506KV03185	3	185	22.5	67.5	9640
MP4506KV03240	3	240	25.5	75.0	11985
MP4506KV03300	3	300	28.5	82.0	14475
MP4506KV03400	3	400	32.0	91.5	18920

ELECTRICAL CHARACTERISTICS

NO. OF CORES	NOMINAL CROSS SECTIONAL AREA mm ²	CURRENT CARRYING CAPACITY Amps		CONDUCTOR MAXIMUM SHORT-CIRCUIT CURRENT, T=1S kA	MAXIMUM CONDUCTOR DC RESISTANCE AT 20°C ohm/km	INDUCTANCE mH/km	CAPACITANCE μF/km
		In air	Buried				
3	25	143	148	3.6	0.7270	0.38	0.27
3	35	172	177	5.0	0.5240	0.36	0.30
3	50	205	209	7.5	0.3870	0.34	0.33
3	70	253	255	10.0	0.2680	0.32	0.38
3	95	307	304	13.6	0.1930	0.30	0.43
3	120	352	345	17.2	0.1530	0.29	0.48
3	150	397	388	21.5	0.1240	0.28	0.51
3	185	453	437	26.5	0.0991	0.28	0.54
3	240	529	503	34.3	0.0754	0.27	0.60
3	300	599	563	42.9	0.0601	0.26	0.63
3	400	683	631	57.2	0.0470	0.26	0.66

The information contained within this datasheet is for guidance only and is subject to change without notice or liability. All the information is provided in good faith and is believed to be correct at the time of publication. When selecting cable accessories, please note that actual cable dimensions may vary due to manufacturing tolerances.