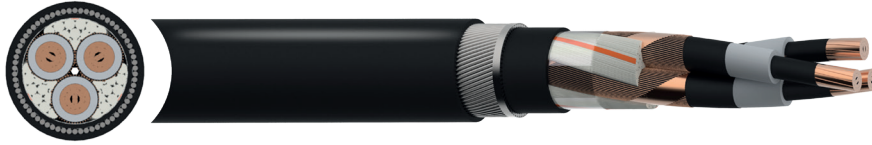


LXHIOAE 3.6/6kV Cable



Eland Product Group: MP51

APPLICATION

Portuguese reference Medium Voltage cable for power distribution and power supply stations used in Utility and Industrial applications, for rated voltages up to 3.6/6kV. Suitable for fixed installations, directly buried. Good mechanical protection.

CHARACTERISTICS

Voltage Rating U_0/U (Um)
3.6/6 (7.2)kV

Temperature Rating
Conductor maximum operating temperature: 90°C
Maximum short-circuit temperature: 250°C

Minimum Bending Radius
During installation: 15 x overall diameter
After installation: 10 x overall diameter

CONSTRUCTION

Conductor
Class 2 stranded Aluminium,

Conductor Screen
Semi-conductive XLPE (Cross-Linked Polyethylene)

Insulation
XLPE (Cross-Linked Polyethylene)

Insulation Screen
Semi-conductive XLPE (Cross-Linked Polyethylene)

Metallic Screen
Copper wire screen

Tape
Plastic tape is applied over the screen

Filler
Extruded polymeric material

Bedding
PE (Polyethylene)

Armour
STA (Steel Tape Armoured)

Sheath
PE (Polyethylene) type ST7

Sheath Colour
● Black

STANDARDS

IEC 60228, IEC 60502-2

ISO/IEC 17025 LABORATORY TESTED

This product is subject to the Quality Assurance protocols of The Cable Lab®, an ISO/IEC 17025 accredited cable testing laboratory. Testing includes vertical flame, conductor resistance, tensile & elongation, and dimensional consistency, verified to published standards and approved product drawings.



8578



FS 672069



EMS 672067



OHS 672066

REGULATORY COMPLIANCE

This cable meets the requirements of the RoHS Directive 2011/65/EU. RoHS compliance has been tested and confirmed by The Cable Lab® as meeting the requirements of the BSI RoHS Trusted Kitemark™.



KM 026287





DIMENSIONS

ELAND PART NO.	NO. OF CORES	NOMINAL CROSS SECTIONAL AREA mm ²	NOMINAL DIAMETER mm		NOMINAL WEIGHT kg/km
			Over Insulation	Overall	
MP5106KV03025	3	25	12.5	44.0	2860
MP5106KV03035	3	35	13.5	46.5	3140
MP5106KV03050	3	50	15.0	49.5	3460
MP5106KV03070	3	70	16.5	53.5	3965
MP5106KV03095	3	95	18.0	57.5	4575
MP5106KV03120	3	120	20.0	61.0	5095
MP5106KV03150	3	150	21.0	64.5	5650
MP5106KV03185	3	185	22.5	68.0	6320
MP5106KV03240	3	240	25.5	74.5	7545
MP5106KV03300	3	300	28.5	82.0	8845
MP5106KV03400	3	400	32.0	91.0	11485

ELECTRICAL CHARACTERISTICS

NO. OF CORES	NOMINAL CROSS SECTIONAL AREA mm ²	CURRENT CARRYING CAPACITY Amps		CONDUCTOR MAXIMUM SHORT-CIRCUIT CURRENT, T=1S kA	MAXIMUM CONDUCTOR DC RESISTANCE AT 20°C ohm/km	INDUCTANCE mH/km	CAPACITANCE μF/km
		In air	Buried				
3	25	111	115	2.4	1.2000	0.38	0.27
3	35	133	136	3.3	0.8680	0.36	0.30
3	50	159	162	4.7	0.6410	0.35	0.33
3	70	196	198	6.6	0.4430	0.32	0.38
3	95	238	236	9.0	0.3200	0.30	0.42
3	120	274	268	11.3	0.2530	0.29	0.47
3	150	309	302	14.2	0.2060	0.29	0.51
3	185	354	342	17.5	0.1640	0.28	0.55
3	240	415	395	22.7	0.1250	0.27	0.60
3	300	472	444	28.3	0.1000	0.26	0.63
3	400	545	504	37.8	0.0778	0.26	0.66

The information contained within this datasheet is for guidance only and is subject to change without notice or liability. All the information is provided in good faith and is believed to be correct at the time of publication. When selecting cable accessories, please note that actual cable dimensions may vary due to manufacturing tolerances.