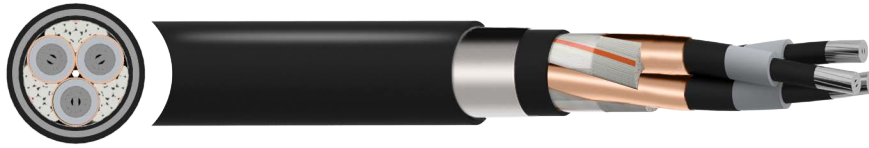


LXHIAV 3.6/6kV Cable



Eland Product Group: MP48

APPLICATION

Portuguese Medium Voltage cable for power distribution and power supply stations used in Utility and Industrial applications, with a rated voltage of 3.6/6kV. Suitable for fixed installations including directly buried. Good mechanical protection.

CHARACTERISTICS

Voltage Rating U_0/U (Um)

3.6/6 (7.2)kV

Temperature Rating

Conductor maximum operating temperature: 90°C
Maximum short-circuit temperature: 250°C

Minimum Bending Radius

During installation: 15 x overall diameter
After installation: 10 x overall diameter

CONSTRUCTION

Conductor

Class 2 Aluminium, circular, stranded

Conductor Screen

Semi-conductive XLPE (Cross-Linked Polyethylene)

Insulation

XLPE (Cross-Linked Polyethylene)

Insulation Screen

Semi-conductive XLPE (Cross-Linked Polyethylene)

Metallic Screen

Copper tape screen

Filler

Extruded polymeric material

Bedding

PVC (Polyvinyl Chloride)

Armour

STA (Steel Tape Armoured)

Sheath

PVC (Polyvinyl Chloride)

Sheath Colour

● Black

STANDARDS

IEC 60502-2, IEC 60228

Flame retardant according to EN/IEC 60332-1-2,
EN/IEC 60332-3-24,

ISO/IEC 17025 LABORATORY TESTED

This product is subject to the Quality Assurance protocols of The Cable Lab®, an ISO/IEC 17025 accredited cable testing laboratory. Testing includes vertical flame, conductor resistance, tensile & elongation, and dimensional consistency, verified to published standards and approved product drawings.



8578



FS 672069



EMS 672067



OHS 672066

REGULATORY COMPLIANCE

This cable meets the requirements of the RoHS Directive 2011/65/EU. RoHS compliance has been tested and confirmed by The Cable Lab® as meeting the requirements of the BSI RoHS Trusted Kitemark™.



KM 634267





DIMENSIONS

ELAND PART NO.	NO. OF CORES	NOMINAL CROSS SECTIONAL AREA mm ²	NOMINAL DIAMETER mm		NOMINAL WEIGHT kg/km
			Over Insulation	Overall	
MP4806KV03025	3	25	12.5	44.0	2860
MP4806KV03035	3	35	13.5	46.5	3140
MP4806KV03050	3	50	15.0	49.5	3460
MP4806KV03070	3	70	16.5	53.5	3965
MP4806KV03095	3	95	18.0	57.5	4575
MP4806KV03120	3	120	20.0	61.0	5095
MP4806KV03150	3	150	21.0	64.5	5650
MP4806KV03185	3	185	22.5	68.0	6320
MP4806KV03240	3	240	25.5	74.5	7545
MP4806KV03300	3	300	28.5	82.0	8845
MP4806KV03400	3	400	32.0	91.0	11485

ELECTRICAL CHARACTERISTICS

NO. OF CORES	NOMINAL CROSS SECTIONAL AREA mm ²	CURRENT CARRYING CAPACITY Amps		CONDUCTOR MAXIMUM SHORT-CIRCUIT CURRENT, T=1S kA	MAXIMUM CONDUCTOR DC RESISTANCE AT 20°C ohm/km	INDUCTANCE mH/km	CAPACITANCE μF/km
		In air	Buried				
3	25	111	115	2.4	1.2000	0.38	0.27
3	35	133	136	3.3	0.8680	0.36	0.30
3	50	159	162	4.7	0.6410	0.35	0.33
3	70	196	198	6.6	0.4430	0.32	0.38
3	95	238	236	9.0	0.3200	0.30	0.42
3	120	274	268	11.3	0.2530	0.29	0.47
3	150	309	302	14.2	0.2060	0.29	0.51
3	185	354	342	17.5	0.1640	0.28	0.55
3	240	415	395	22.7	0.1250	0.27	0.60
3	300	472	444	28.3	0.1000	0.26	0.63
3	400	545	504	37.8	0.0778	0.26	0.66

The information contained within this datasheet is for guidance only and is subject to change without notice or liability. All the information is provided in good faith and is believed to be correct at the time of publication. When selecting cable accessories, please note that actual cable dimensions may vary due to manufacturing tolerances.