

Transformer Terminals 4 Hole Fixing



Eland Product Group: **FCA**

APPLICATION

The transformer terminal four hole fixing, also known as a four hole crimp lug, connects to the four fixing studs on transformer fixing points to give the best surface contact possible.

FT70 to FT300 are brazed palm type.

FT400 to FT1000 are formed from 1 single tube.

CABLE STANDARDS

BS 4579

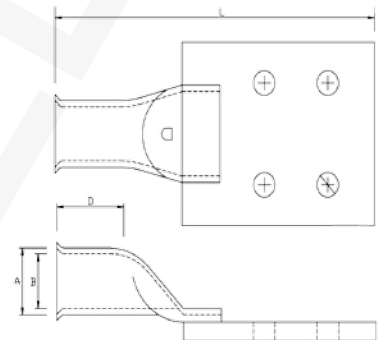


The electrical and dimensional properties of this product are measured by the Technical and Quality Assurance department at the Eland Cables laboratory. Cable performance in respect of conductor resistance, construction quality (workmanship), dimensional consistency, and other parameters are verified to published standards and approved product drawings. Conformance to RoHS (Restriction of the use of Hazardous Substances) is determined and confirmed.

DIMENSIONS

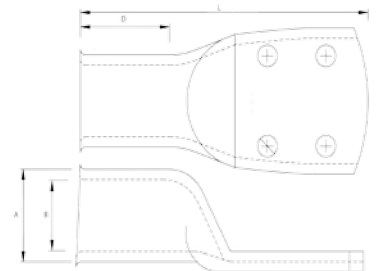
Brazed Palm 4 Hole Terminals

ELAND PART NO.	TOTAL WIDTH	ENTRY WIDTH	ENTRY DEPTH	TOTAL LENGTH
	A mm	B mm	D mm	L mm
FT70-8	15	11.5	18	106
FT95-8	17	13.5	24	112
FT120-8	19	15.0	27	116
FT150-8	21	16.5	27	121
FT185-8	23	18.5	30	125
FT240-8	26	21.0	32	127
FT300-8	28	23.0	37	135



Formed 4 Hole Terminals

ELAND PART NO.	TOTAL WIDTH	ENTRY WIDTH	ENTRY DEPTH	TOTAL LENGTH
	A mm	B mm	D mm	L mm
FT400-8	36	27.0	38	123
FT500-8	38	30.0	60	149
FT630-8	44	34.0	65	152
FT800-8	49	38.2	56	164
FT1000-8	53	42.5	57.5	173



The information contained within this datasheet is for guidance only and is subject to change without notice or liability. All the information is provided in good faith and is believed to be correct at the time of publication. When selecting cable accessories, please note that actual cable dimensions may vary due to manufacturing tolerances.